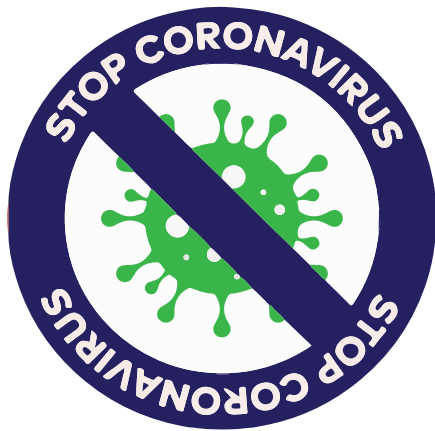
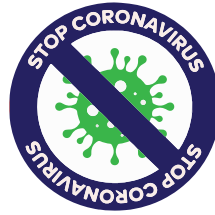




# ARVAND SWISS

## Personal Protective Equipment





# SWISS+ COVER

SwissCover is made by Tyvek®  
SwissCover garments provide an ideal balance of protection, durability and comfort. The coveralls provide an effective barrier against particles, maintenance and many others.  
Color: White

## Application:

- Pharmacy
- food factory
- Airport epidemic checkpoint
- Government epidemic prevention workers
- Maintenance
- Other public Epidemic checkpoints

	SIZE CHART			
	Isolated clothing			
	Shoulder width	68 CM	70 CM	76 CM
	appropriate height	175- 160 cm	170- 180 cm	180- 200 cm

**SWISS+COVER** each package contains  
1pcs coverall and 1 pair Boot shoe cover

# MEDICAL+ FACE MASK

Swiss Mask (3 - Layer protection):

Wearing it could effectively block out dust, bacteria, droplets, and air pollution, and then offer oxygen for you to breath comfortably and protecting your health.

- Breathable and comfortable:

Lightweight design, skin-friendly material, It won't creat fatigue or stress to your skin.

- Built-in adjustable metal nose-bridge strip

## Application:

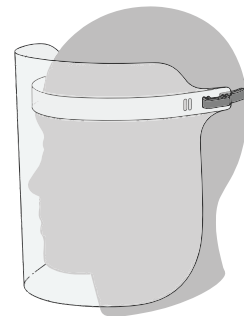
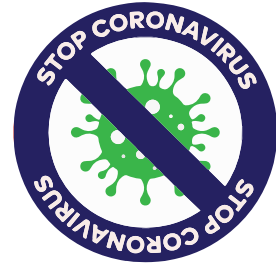
Dental clinic, Daily activities, such as Daily outing, House cleaning,...

Package Contents: 50x Face Mask



# FACE+SHIELD

A Face shield is intended to protect the wearer's partial or entire face and the eyes from hazards. Face shields should be used with spectacles and/or goggles.





**Sterilized for inactive Covid-19!**

**STEAM**

121°C 15 min

## FACE MASK FFP2-KN95

**FFP2**

**EN149:2001 + A1:2009**

**KN95**

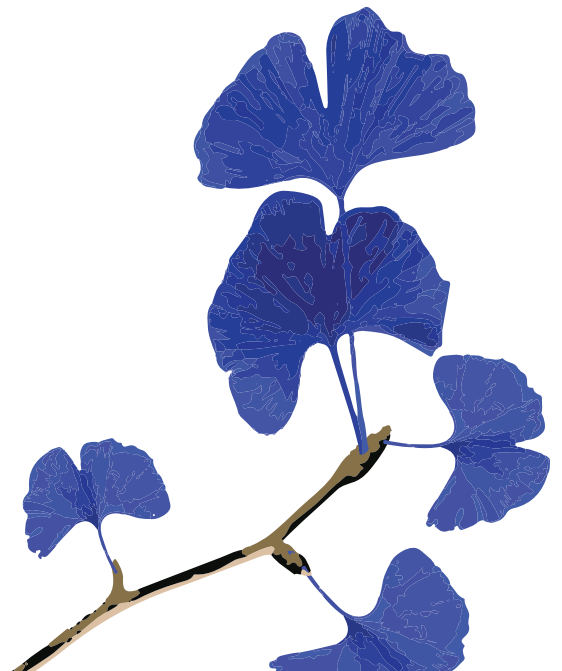
**GB2626- 2006**

### FACE MASK FFP2-KN95

- ✓ Higher Bacterial Filtration Efficiency
- ✓ Restriction-less breathing
- ✓ Fluid Resistant
- ✓ Comfortable and easy to wear

6- PLY DISPOSABLE MASK

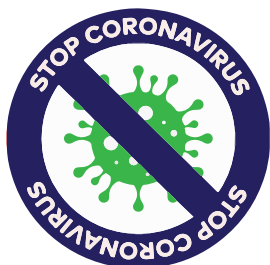
6- PLY SOLID PROTECTIVE MASK



**ARVAND  SWISS**

# ARVAND SWISS

Personal Protective Equipment



Habsburgerstrasse 12

6003 Luzern, Switzerland

[www.arvandswiss.com](http://www.arvandswiss.com)

[info@arvandswiss.com](mailto:info@arvandswiss.com)

Telefax: +41 41 220 24 59

+41 41 220 24 60

CODE: CAS-PPE - 2020-06  
VER:01

